

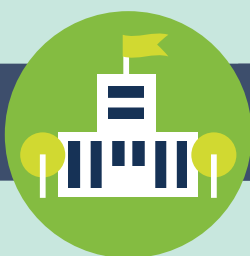
Case Study: Speak Out and MyEnglishLab

KEY TAKEAWAY

Use MyEnglishLab's reporting features to target course lectures to those skills students' need most help with.



Adult Instructor:
Mariusz Buszta



Institution:
**Józef Piłsudski University
College of Physical Education
and Sport in Biała Podlaska**



Country:
Poland

“Students, using MyEnglishLab, are more motivated, interested and confident.”

Mariusz

Implementation

Mariusz began using the Speak Out course book three years ago and added MyEnglishLab as a second resource two years ago. “The difference is noticeable” according to Mariusz, “especially in students’ vocabulary and speaking and listening skills.”

Mariusz’s English students, all first and second-year Physiotherapy majors receive 120 hours of face-to-face instruction over the 10-week semester. After finishing each unit, students are required to complete all MyEnglishLab exercises (approximately 10 activities per week). While Mariusz allows unlimited attempts on practice exercises he gives students only one attempt on the module test he assigns and he limits the time, usually to around 30 minutes depending on the test content.

Teacher and Students Experience

“I used only the course book for two years before I introduced MyEnglishLab so I can speak to the differences I have noticed in my students,” says Mariusz. “Students, using MyEnglishLab, are motivated, interested and confident and the unlimited practice opportunities helps my students remember, remember better and longer.”

Mariusz also uses MyEnglishLab’s reporting functions to guide his lectures. “The day before the class meets, I review the MyEnglishLab diagnostic report. I bring a printout of the report to the classroom and discuss it. This strategy saves me approximately 15 minutes of classroom time. It enables me to target those areas students most struggle with so class time is used much more effectively.”

Benefits

Mariusz collects lots of data on his students, such as placement scores, MyEnglishLab activities, and quiz and final exam results. Such a well-rounded view of students allows for interesting questions to be asked.

For example, does a student's initial placement exam score impact that student's opportunity to succeed in the class? Analysis indicates that no matter a student's initial placement score, if the student actively engages with MyEnglishLab, that student has an equal opportunity to move to the top of his/her class.

Results

If a student places in the bottom (25th percentile or below) group according to the initial placement test, that student has about an equal chance of obtaining a top grade if that student's engagement in MyEnglishLab tests is comparable to a student who initially placed in the top (75th percentile or above) group.

Student Cohort Class size: 69	Average Initial Placement Scores	Placement Scores Spring 2013 Final Exam Results	Probability*
25th percentile (bottom 25% of class) 75th percentile (top 25% of class)	43% \pm 5% 76% \pm 4%	Very Good to Excellent Range	8% \pm 4% 7% \pm 4%

*95% confidence interval

Analysis Details

- ▶ We looked at the incoming students' placement scores and their outgoing final exam scores.
- ▶ We focused on the bottom 25% of the class and the top 25% of the class and asked what is the likelihood that a student in the bottom (or 25th percentile) of the class could move up to the top (or 75th percentile) of the class based on their completion of the required MyEnglishLab test activities?

Conclusion

Mariusz relies on MyEnglishLab's reporting functions to help him target his lectures, resulting in a more effective learning experience for students.

By collecting his students' results Mariusz is able to understand how deeply MyEnglishLab can impact student success when students actively engage with MyEnglishLab.



MyEnglishLab helps to equalise students' chances for success if they complete all the work their teacher assigns in the course.

Mariusz Buszta

MyEnglishLab & Speak Out



MyEnglishLab offers structured online English practice for students, with instant marking and reporting for teachers. MyEnglishLab is proven to improve student results, and helps make teachers' lives easier.

Speak Out

Speakout is a six-level English course for adult students that takes students from CEF A1 to C1 (GSE 22-79).

Using content from the BBC, Speakout builds the skills and knowledge students need to communicate confidently.